

GOODFELLOW

CRUSHERS



WWW.GOODFELLOWCRUSHERS.COM

HISTORY

Goodfellow Corp. was founded in 1960 by Lynn Goodfellow. He started the business in southern California, eventually moving to Southern Utah to raise his children. His four sons grew up working in the business. Three are still working here today.

In 1988, after an airplane accident, Lynn recognized the need to move closer to the market he had served for years. He chose Boulder City, Nevada, near Las Vegas, mainly because of the explosive growth the area was experiencing. Since locating there, Goodfellow Corp. has expanded continuously, adding new services to help our customers be more productive.

In 1997, Goodfellow Corp. opened a new facility in Lindon, Utah, which has many of the same capabilities as the Nevada facility. Goodfellow Corp. has achieved several notable accomplishments including KPI-JCI (Astec Companies) National Dealer of the Year from 2005 through 2012.

Lynn, now semi-retired, has resumed the hobby of his youth- building and racing cars on the Bonneville Salt Flats. With the help of Goodfellow Corp. engineers, fabricators, machinists, and friends, he has built the Mormon Missile Diesel Streamliner. In September 2008, he drove the car to a new world FIA class record with a two-way average speed of 314 mph, with a top speed of 342 mph. He hopes to achieve the overall diesel speed record in the near future.



Nevada

Located at 12451 Old Hwy. 95 in Boulder City, our 30 acre facility is only 20 minutes from the McCarran International Airport of Las Vegas.



Utah

30 minutes from Salt Lake City, our Utah office is Located just off exit 275 at 390 North 2000 West in Lindon. The 9 acre yard is easy to spot while driving on the I-15 freeway.



California

This 6 acre facility is less than 20 minutes from the Ontario airport, just off Interstate-10. Although the smallest of our three locations, it's complete with a parts warehouse, service facility, and crusher sales/rentals.





At **Goodfellow Corp.** our goal is to give the customer complete service. That's why we run an all in house operation.



Products we offer include:

- Screens
- Feeders
- Washers
- Conveyors
- Stackers
- Jaw and Cone Crushers
- Used Equipment

Our knowledgeable sales representatives can help you find the best equipment for your needs. Or check out our website to see the current inventory.



We maintain a parts inventory of over \$3 million. Parts for KPI-JCI equipment, along with many other manufacturers are kept in stock. We carry a wide selection of idlers, belting, gear boxes, pulleys, drive belts, and other conveyor components. We stock a variety of Rim-Tec Manganese for many popular cones and jaws. Screen cloth made to customer specification is available. Local parts delivery is free and we ship all over the United States and Latin America.



FABRICATION



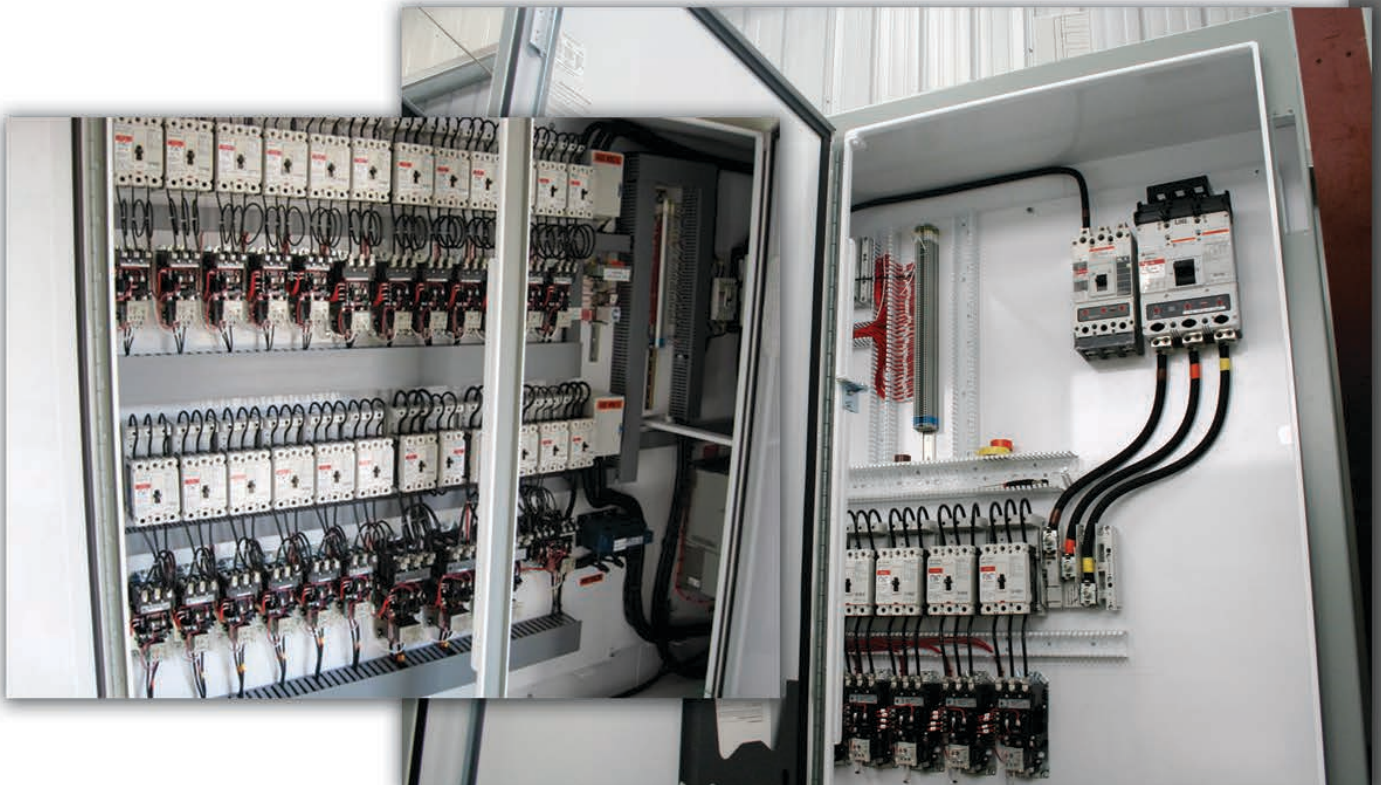
First, our trained engineers design an equipment system tailored to your specifications. Next, our welders and machinists build it in our fully equipped fabrication shops.

We specialize in building custom chassis, support structures, conveyors and stackers, bins and drive-over unloaders.

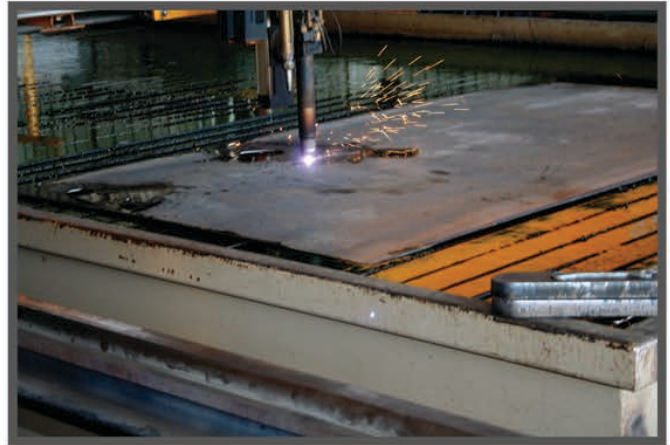


ELECTRICAL

We construct custom panels and controls vans in our extensive electric shop. Electricians are available for field service work and plant wiring.



MACHINE SHOP



Our two CNC Plasma Cutters allow for precision and accuracy. We have complete machine shop dedicated to your crusher rebuild, replacement, and repair needs. We have boring mills up to 12 feet, lathes up to 52 inches by 25 feet, and milling machines up to 10.5 feet.



CRANES/TRUCKS

With our affiliates, G&S Crane Service, we can assist with plant set up, loading and unloading. Cranes are available in both our Nevada and Utah locations from 18 to 74 tons.

Our in house heavy transport fleet allows for on-time delivery.



SERVICE

We have factory trained service technicians with years of experience at each location, along with a fleet of fully equipped service trucks. Our service people travel the western United States and Mexico, providing:

On-Site Technical Help
Start-Up Training
Rebuild Work
Set-Up Assistance
Factory Authorized Warranty Work



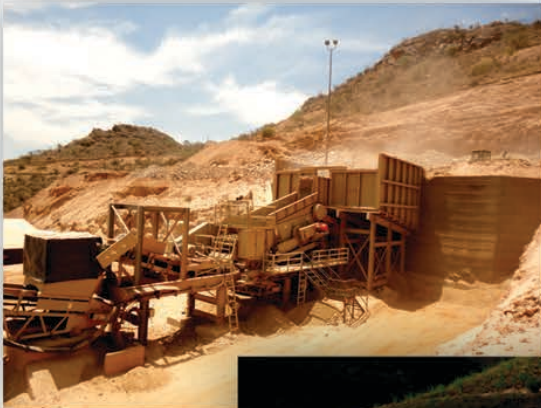


We design and fabricate custom equipment to maximize your mining operations.

Ore processing systems

Leach pad conveying and stacking systems

Overland conveyors



NEVADA OFFICE

12451 OLD HIGHWAY 95
BOULDER CITY, NV 89005

PHONE: 702.293.7504
FAX: 702.293.0529

SALES & SERVICE

KURT GOODFELLOW: 702.592.3402
MARK GOODFELLOW: 702.595.6765
BRENT GUBLER: 702.296.6563

PARTS & SALES

RALPH LAZARO: 702.296.6553
(PARTS MANAGER)

ENGINEERING

CHAD GOODFELLOW: 702.283.4450
(ENGINEERING MANAGER)

CALIFORNIA OFFICE

280 WEST VALLEY BLVD.
RIALTO, CA 92736

PHONE: 909.874.2700
FAX: 909.874.2744

SALES & SERVICE

RYAN DAHLKE: 909.270.7087
JASON GEWECKE: 626.665.0683

PARTS & SALES

JIM CHATELAIN 480.392.8632
TONNIE BIVENS 702.371.9947

UTAH OFFICE

390 NORTH 2000 WEST
LINDON, UT 84048

PHONE: 801.796.6126
TOLL FREE: 877.796.7877
FAX: 801.796.6128

SALES & SERVICE

RICH HANSEN: 801.376.5586
SY HARRISON: 801.368.4576
DUKE HILL: 801.361.8926
NEIL PETERSEN: 801.368.1628

PARTS & SALES

BERT HANSEN: 801.368.2898
(MANAGER)

JEFF AVERETT: 801.319.0012
TREVOR BRINDLEY: 801.380.7346
(SE HABLA ESPANOL)

ENGINEERING/DESIGN

LANGE FAY: 801.360.2435

IDAHO AREA SALES & SERVICE

MILT BULLOCK: 801.367.3957

G + S CRANE SERVICE

WWW.GSCRANES.COM
STEVE LOVELESS: 801.226.3300

WWW.GOODFELLOWCRUSHERS.COM